

Line T8500

Legend

Single Peak Conductor

Double Peak Conductor

Wide Zone Strong

Wide Zone Medium

Wide Zone Weak

NOTE:

AdTau outcomes used in this MultiPlot were calculated from the Z Field data with 0.01 pVms/Am^4 as the cutoff.

EM Z Component Channel Times (µs)

1120

2141

3167

4198

5234

6281

7339

8406

9484

10573

11682

12818

13974

15151

16370

17641

18953

20307

21745

23286

24911

26620

28495

30578

Scale 1 : 20000

0m400m800m1200m

WGS84 UTM8N

Tarsis Capital Corp.

Cabin Lake Property

Yukon Territory

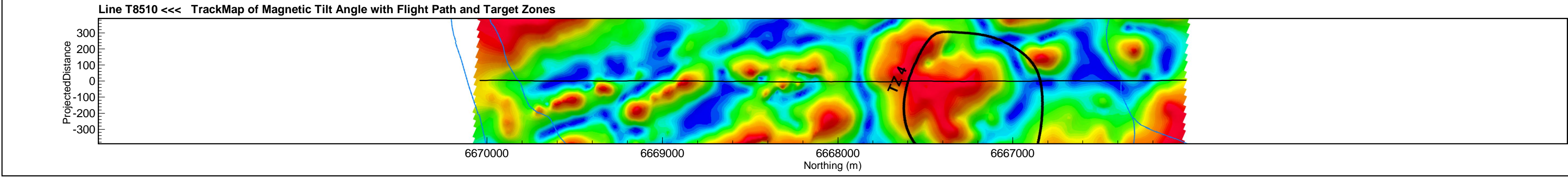
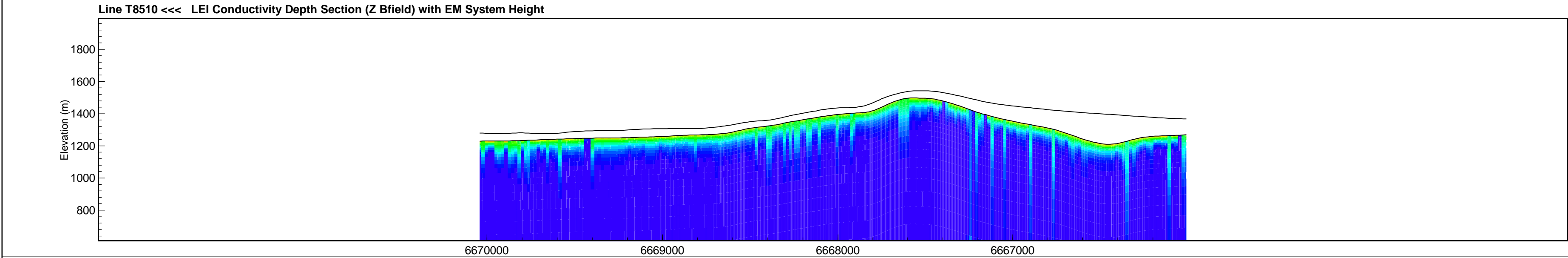
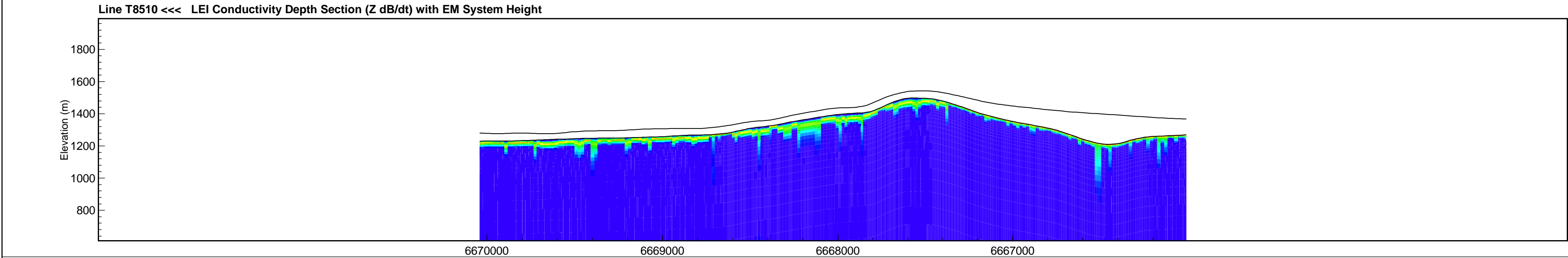
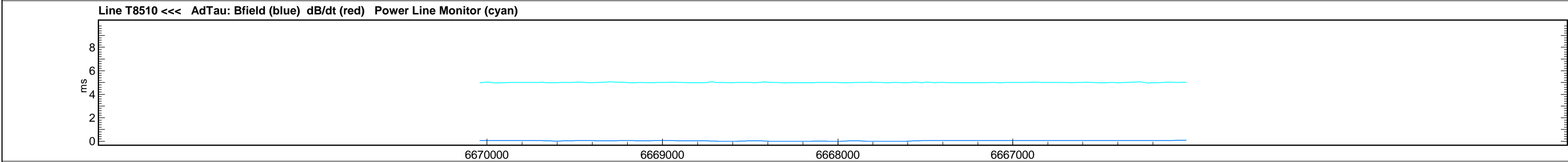
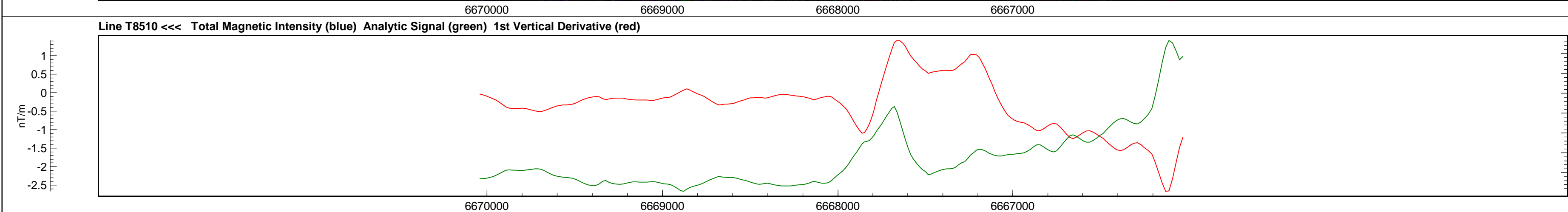
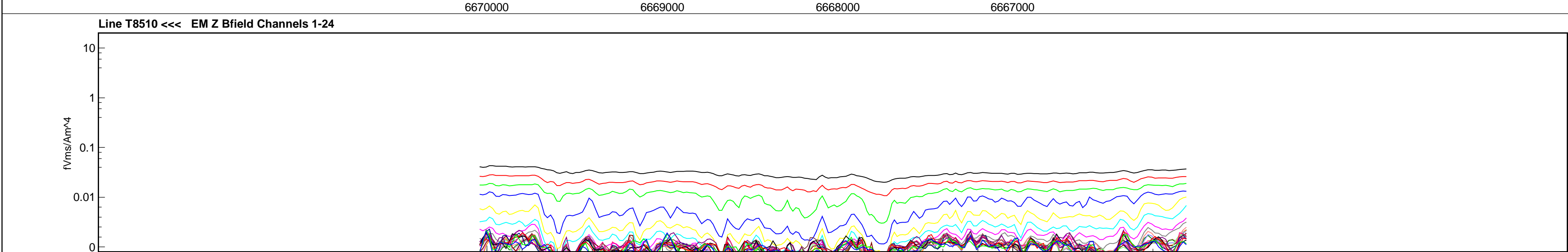
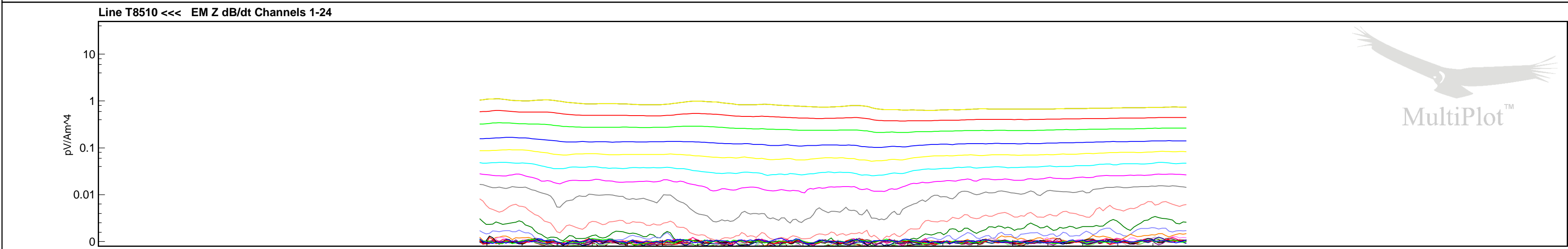
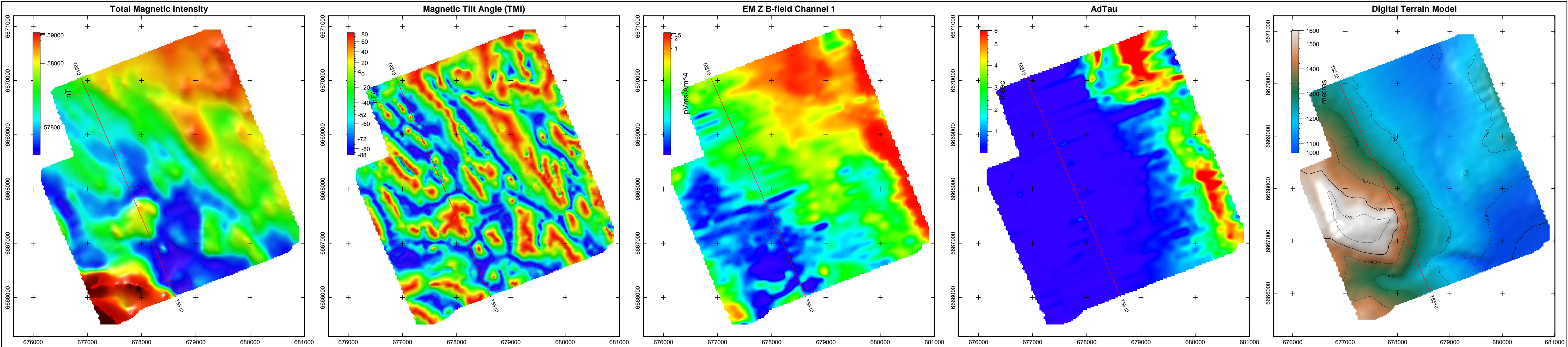
VTEM 30 Hz Survey

Flown: September 2007

Processed: January 2009

Condor Consulting Inc.

Lakewood, Colorado



Line T8510

Legend

- Single Peak Conductor
- Double Peak Conductor
- Wide Zone Strong
- Wide Zone Medium
- Wide Zone Weak

NOTE:
AdTau outcomes used in this MultiPlot were calculated from the Z Bfield data with 0.01 pVms/Am^4 as the cutoff.

EM Z Component Channel Times (µs)	
1	120
2	141
3	167
4	198
5	234
6	281
7	339
8	406
9	484
10	573
11	682
12	818
13	974
14	1151
15	1370
16	1641
17	1953
18	2307
19	2745
20	3286
21	3911
22	4620
23	5495
24	6578

Scale 1 : 20000

0m 400m 800m 1200m

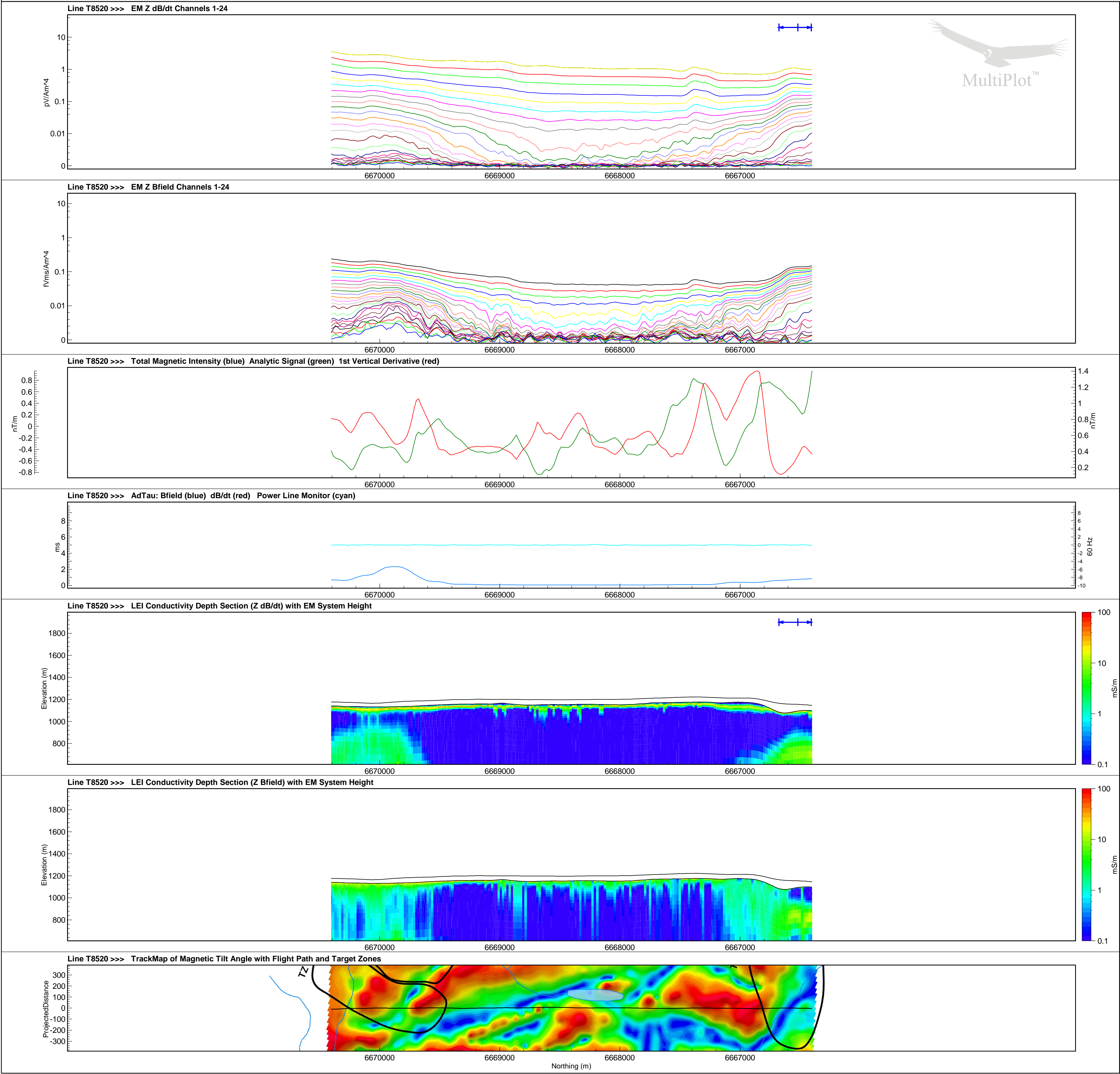
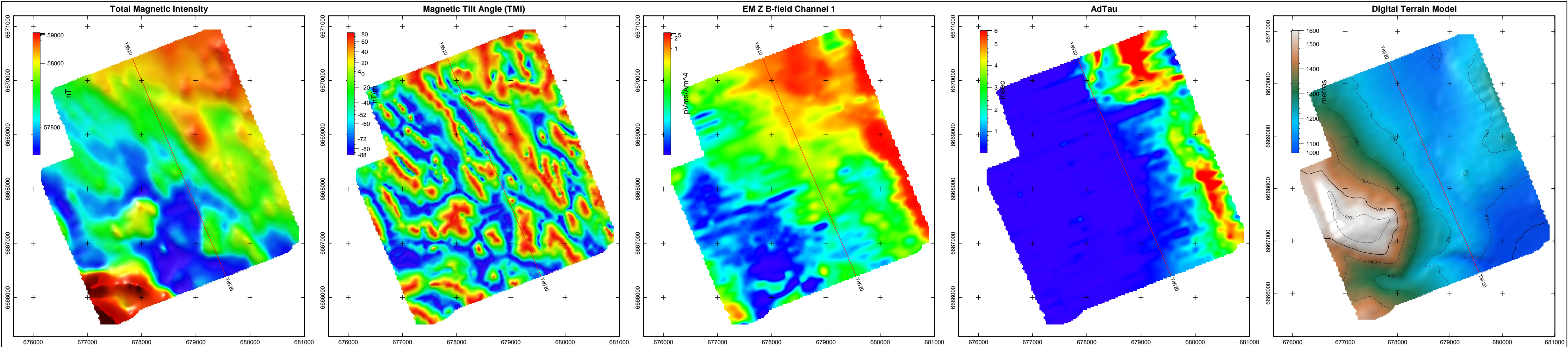
WGS84 UTM8N

Tarsis Capital Corp.
Cabin Lake Property
Yukon Territory
VTEM 30 Hz Survey

Flown: September 2007
Processed: January 2009



Condor Consulting Inc.
Lakewood, Colorado



Line T8520

Legend

- Single Peak Conductor
- Double Peak Conductor
- Wide Zone Strong
- Wide Zone Medium
- Wide Zone Weak

NOTE:
AdTau outcomes used in this MultiPlot were calculated from the Z Bfield data with 0.01 pVms/Am^4 as the cutoff.

EM Z Component	
Channel	Times (μs)
1	120
2	141
3	167
4	198
5	234
6	281
7	339
8	406
9	484
10	573
11	682
12	818
13	974
14	1151
15	1370
16	1641
17	1953
18	2307
19	2745
20	3286
21	3911
22	4620
23	5495
24	6578

Scale 1 : 20000

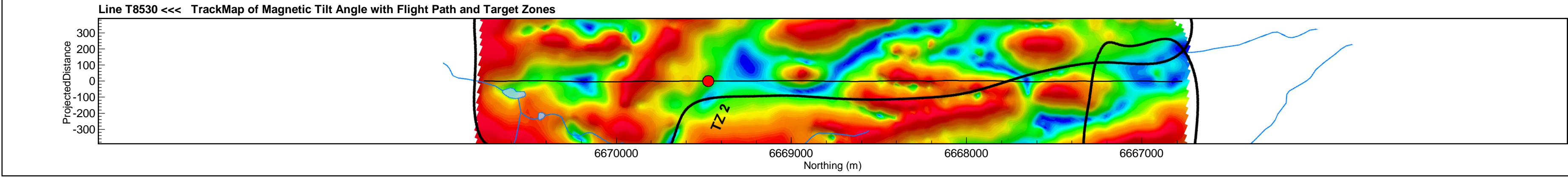
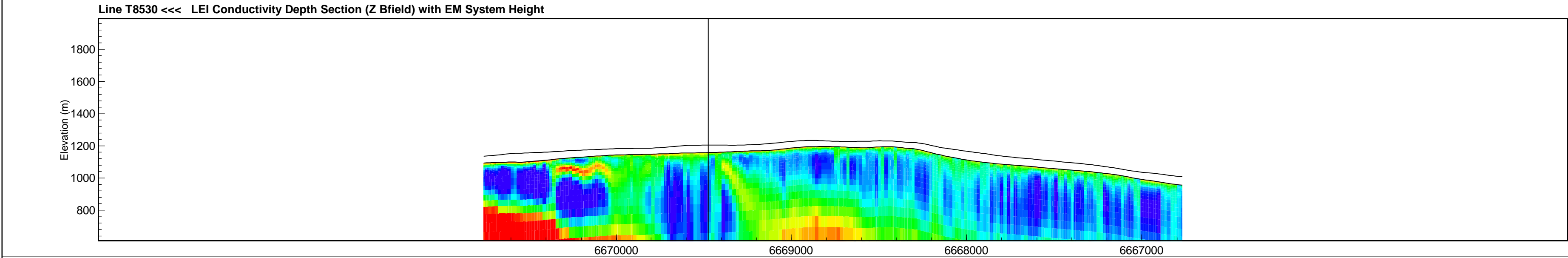
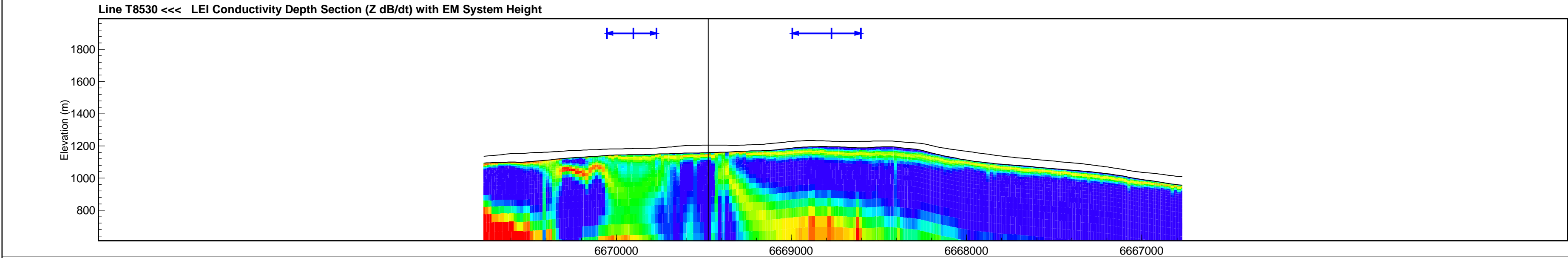
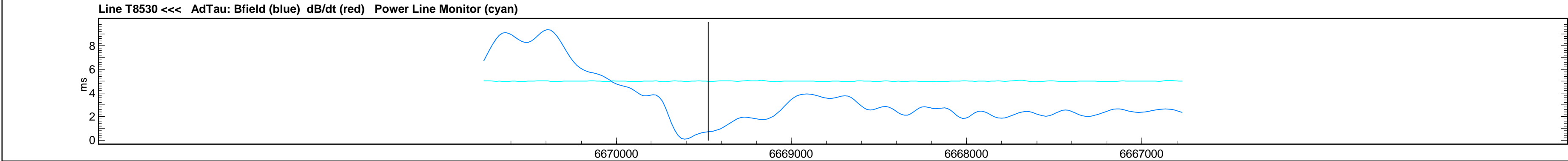
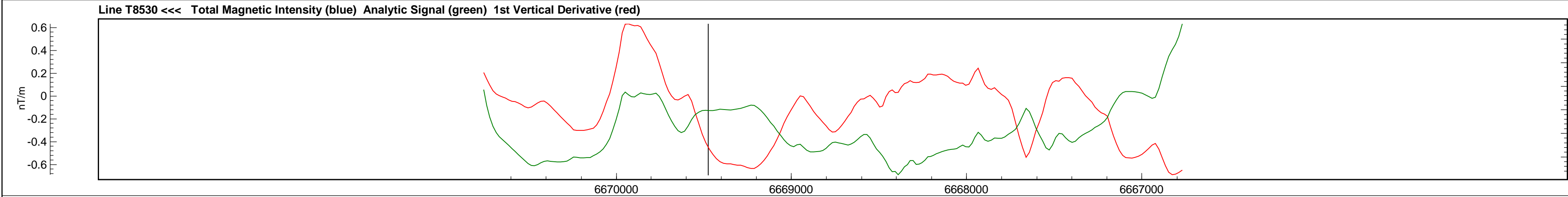
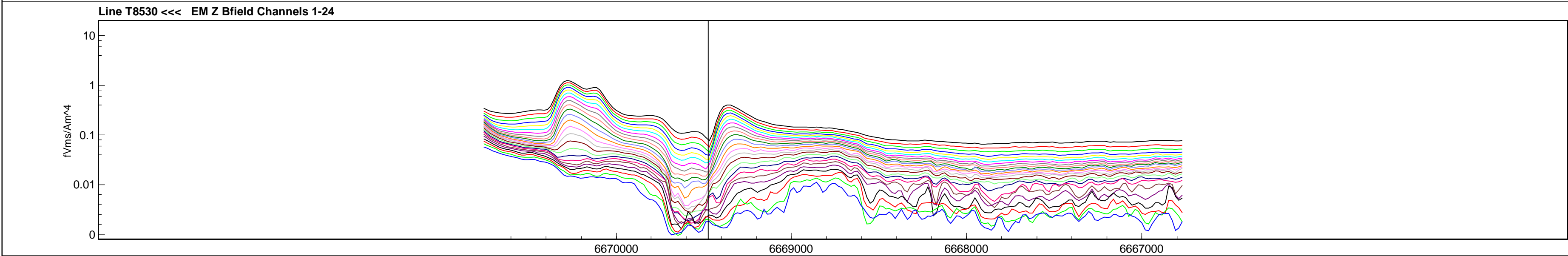
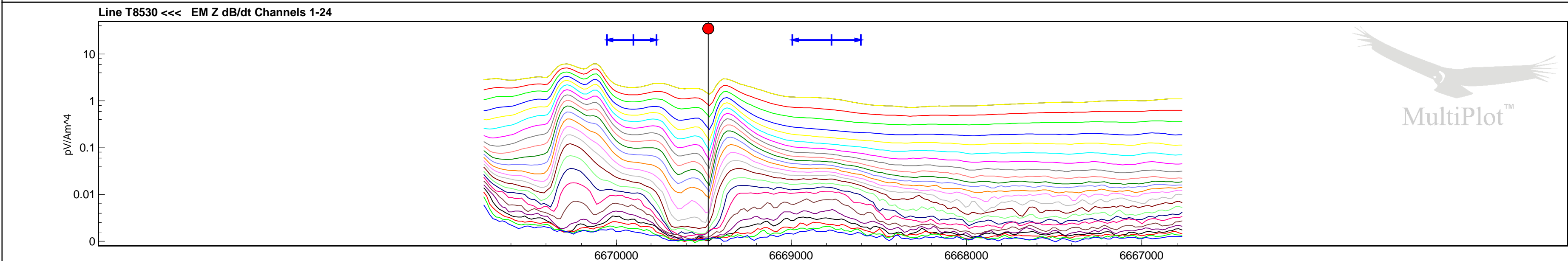
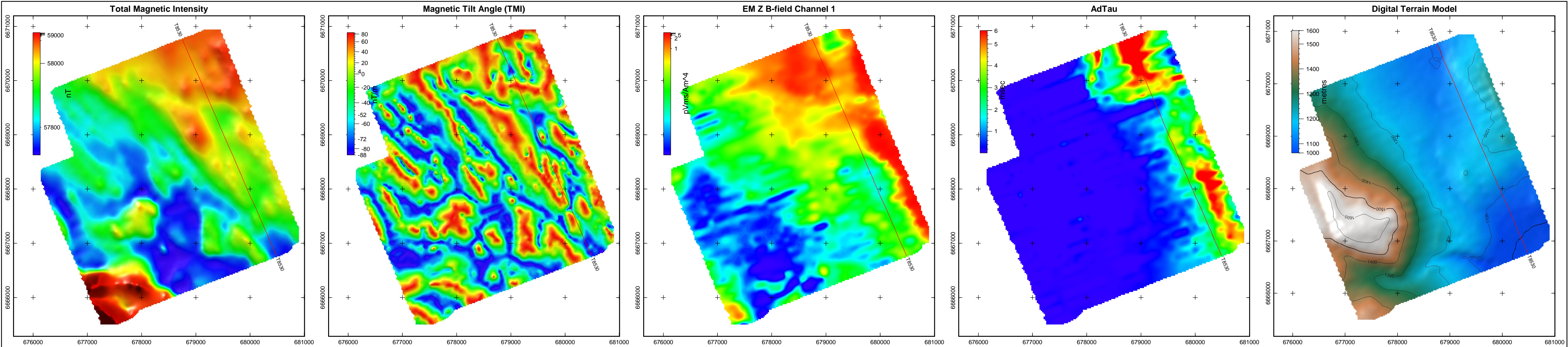


Tarsis Capital Corp.
Cabin Lake Property
Yukon Territory
VTEM 30 Hz Survey

Flown: September 2007
Processed: January 2009



Condor Consulting Inc.
Lakewood, Colorado



Line T8530

Legend

Single Peak Conductor

Double Peak Conductor

Wide Zone Strong

Wide Zone Medium

Wide Zone Weak

NOTE:

AdTau outcomes used in this MultiPlot were calculated from the Z Bfield data with 0.01 pVms/Am^4 as the cutoff.

EM Z Component Channel Times (µs)

1 120

2 141

3 167

4 198

5 234

6 281

7 339

8 406

9 484

10 573

11 682

12 818

13 974

14 1151

15 1370

16 1641

17 1953

18 2307

19 2745

20 3286

21 3911

22 4620

23 5495

24 6578

Scale 1 : 20000

0m 400m 800m 1200m

WGS84 UTM8N

Tarsis Capital Corp.

Cabin Lake Property

Yukon Territory

VTEM 30 Hz Survey

Flown: September 2007

Processed: January 2009

Condor Consulting Inc.

Lakewood, Colorado